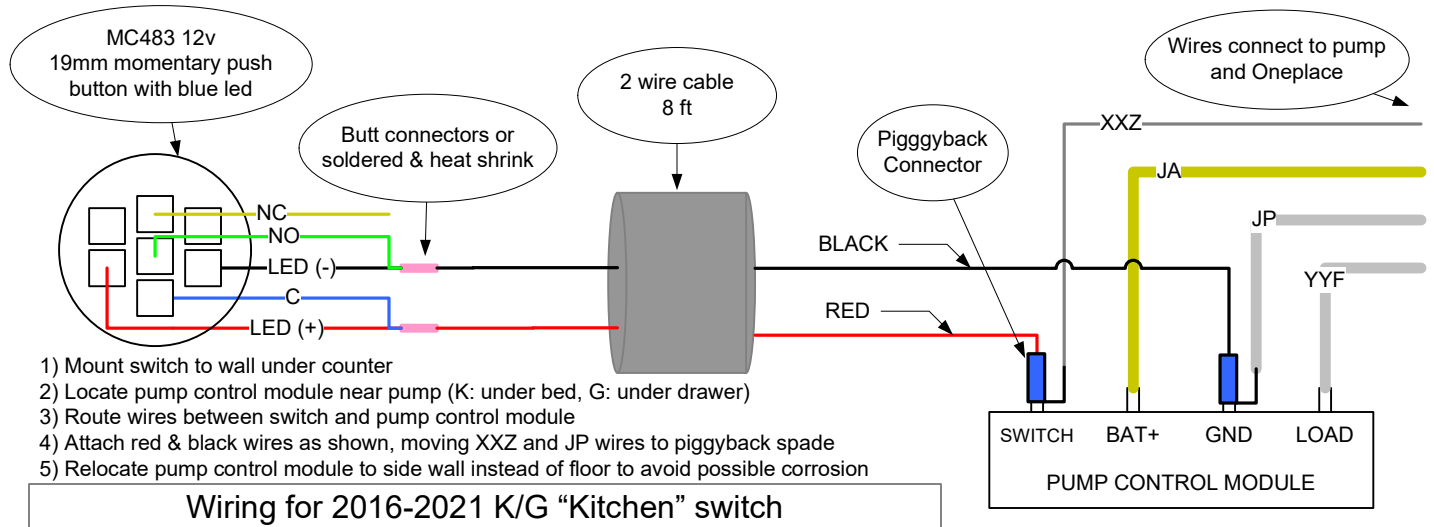
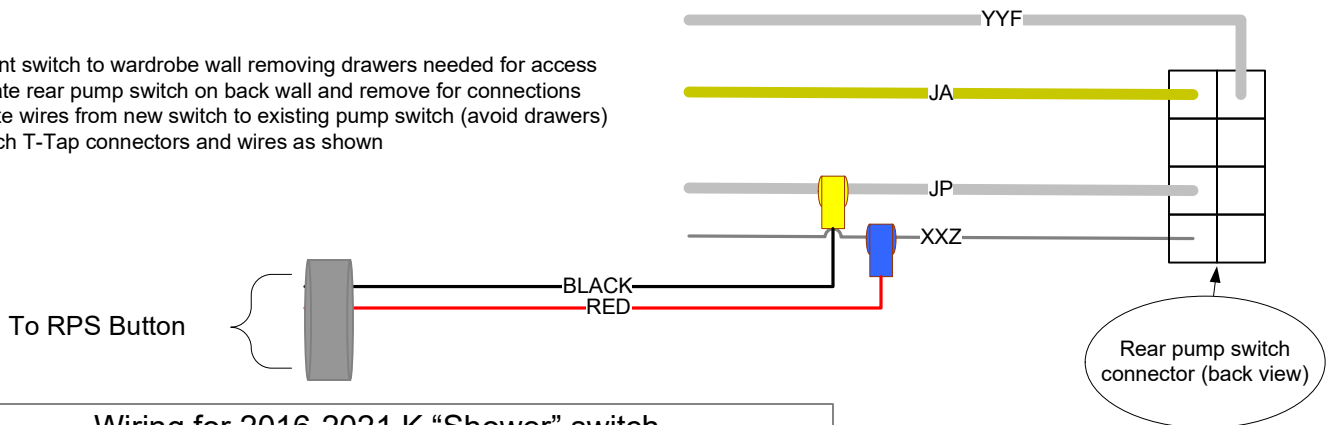


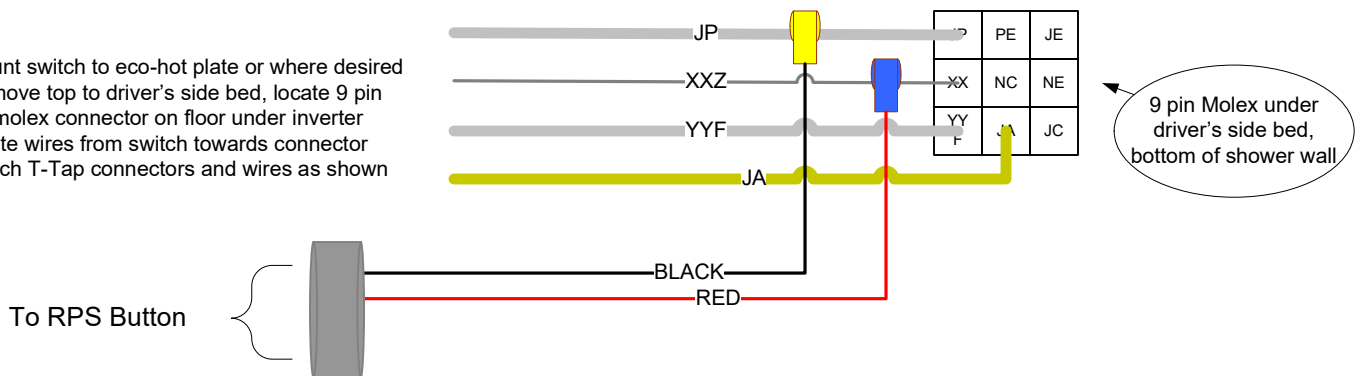
STG.NET "RPS-4" Remote Pump Switch - Wiring Diagram & Instructions



- 1) Mount switch to wardrobe wall removing drawers needed for access
- 2) Locate rear pump switch on back wall and remove for connections
- 3) Route wires from new switch to existing pump switch (avoid drawers)
- 4) Attach T-Tap connectors and wires as shown



- 1) Mount switch to eco-hot plate or where desired
- 2) Remove top to driver's side bed, locate 9 pin white molex connector on floor under inverter
- 3) Route wires from switch towards connector
- 4) Attach T-Tap connectors and wires as shown



Overall Installation Instructions:

- 1) Drill 3/4" hole in location desired for Switch Button and attach with nut or glue in place
- 2) Route cable from switch to location of pump control module or rear wall pump switch
- 3) When not connecting to pump module, Attach T-Taps (yellow on thicker wires, blue to thinner wire)
- 4) Connect per diagram using piggyback connectors to pump module or cut off and add T-Tap elsewhere
- 5) Test that button turns light on and off.

Malfunctions are often caused by spade pin (inside plug connector) missing the hole in the T-Tap connector and going down the side instead. Inspect both sides to see if spade is visible.